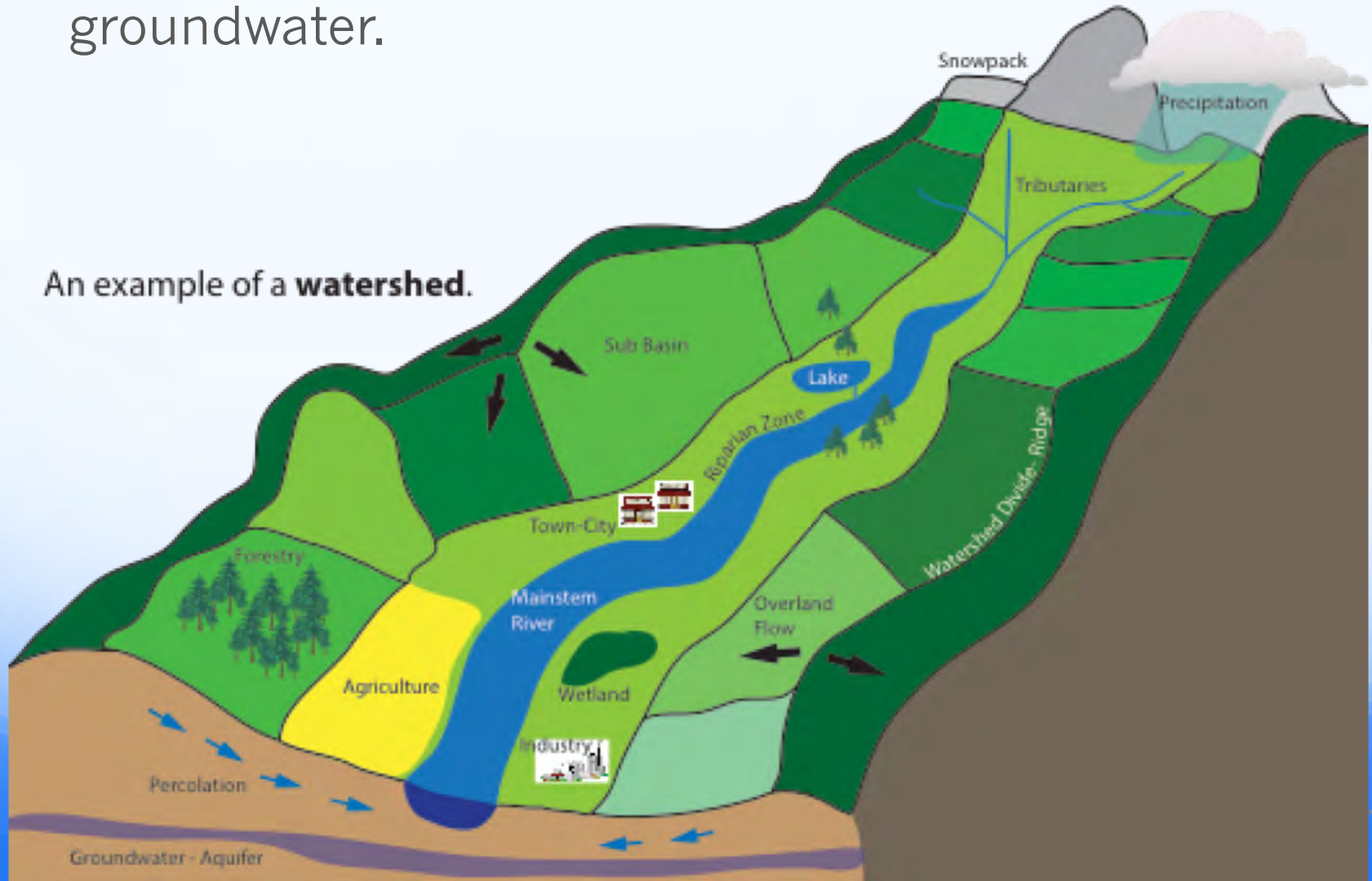


What is a watershed?

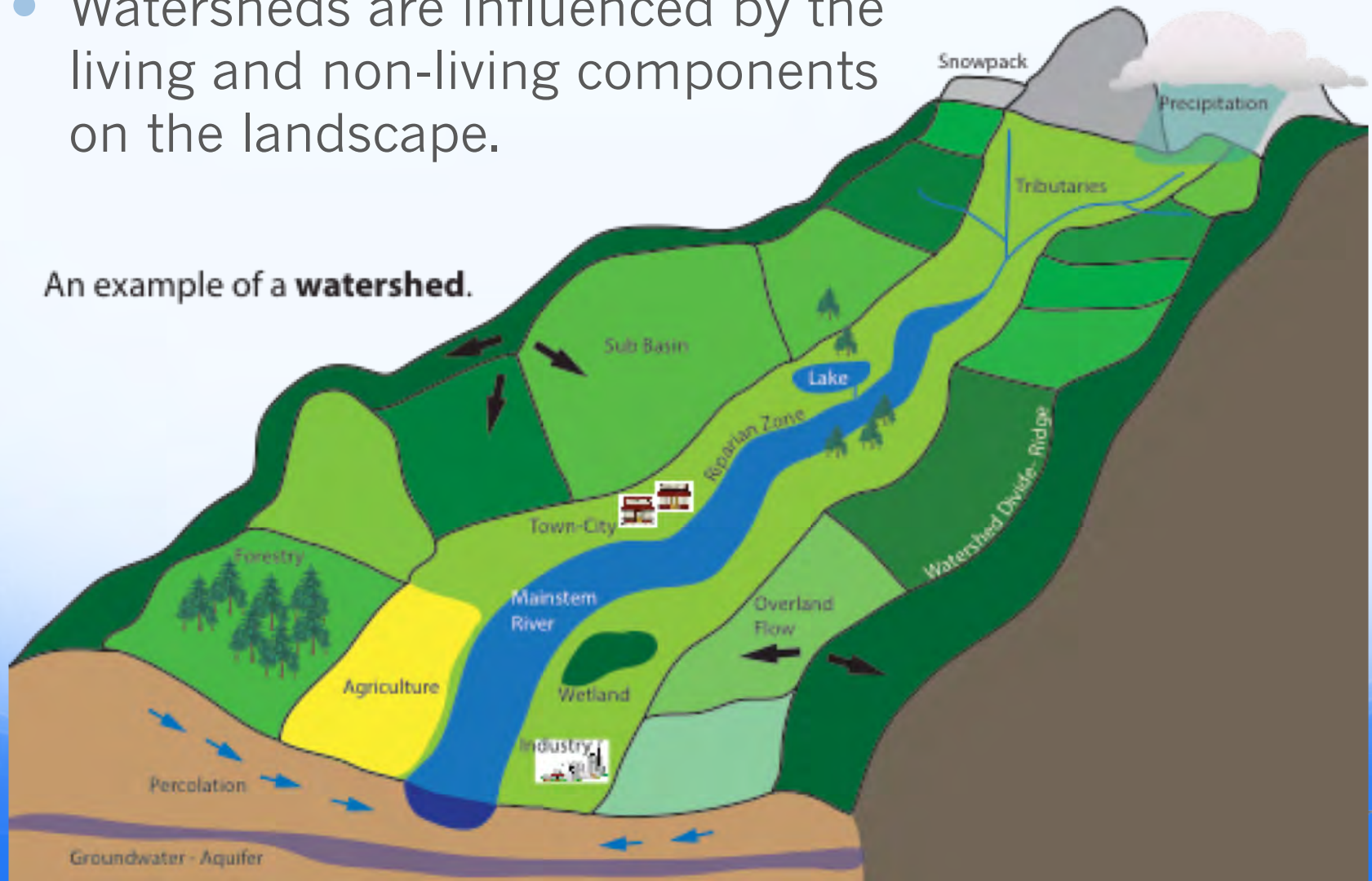
- A **watershed** is the area of land where all of the water that is under it or drains off of it goes into the same place – either a lake, marsh, stream, river or groundwater.

An example of a **watershed**.



- Watersheds are defined by the peaks and valleys of the land.
- Watersheds are influenced by the living and non-living components on the landscape.

An example of a **watershed**.



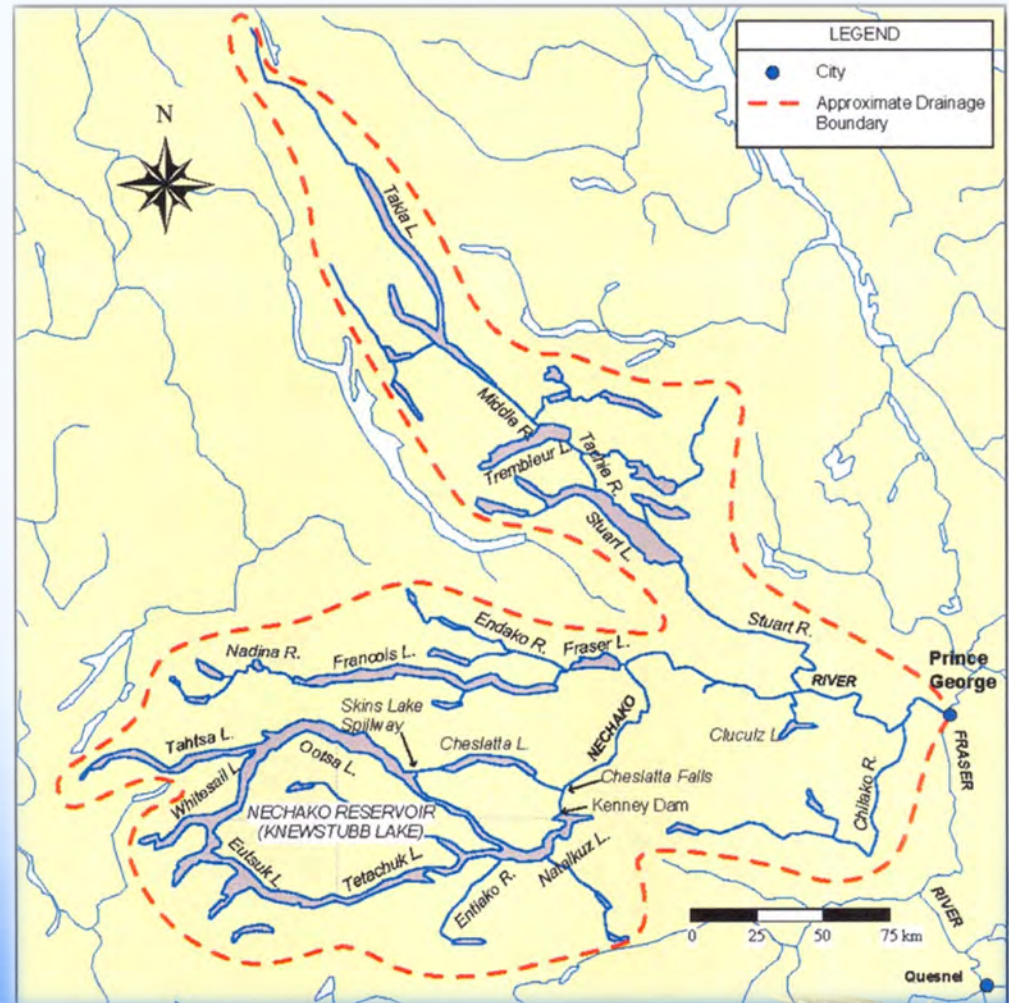
Stop Here!

- Why are we learning about watersheds?
- What are some of the human uses of lands within a watershed?

The Nechako Watershed

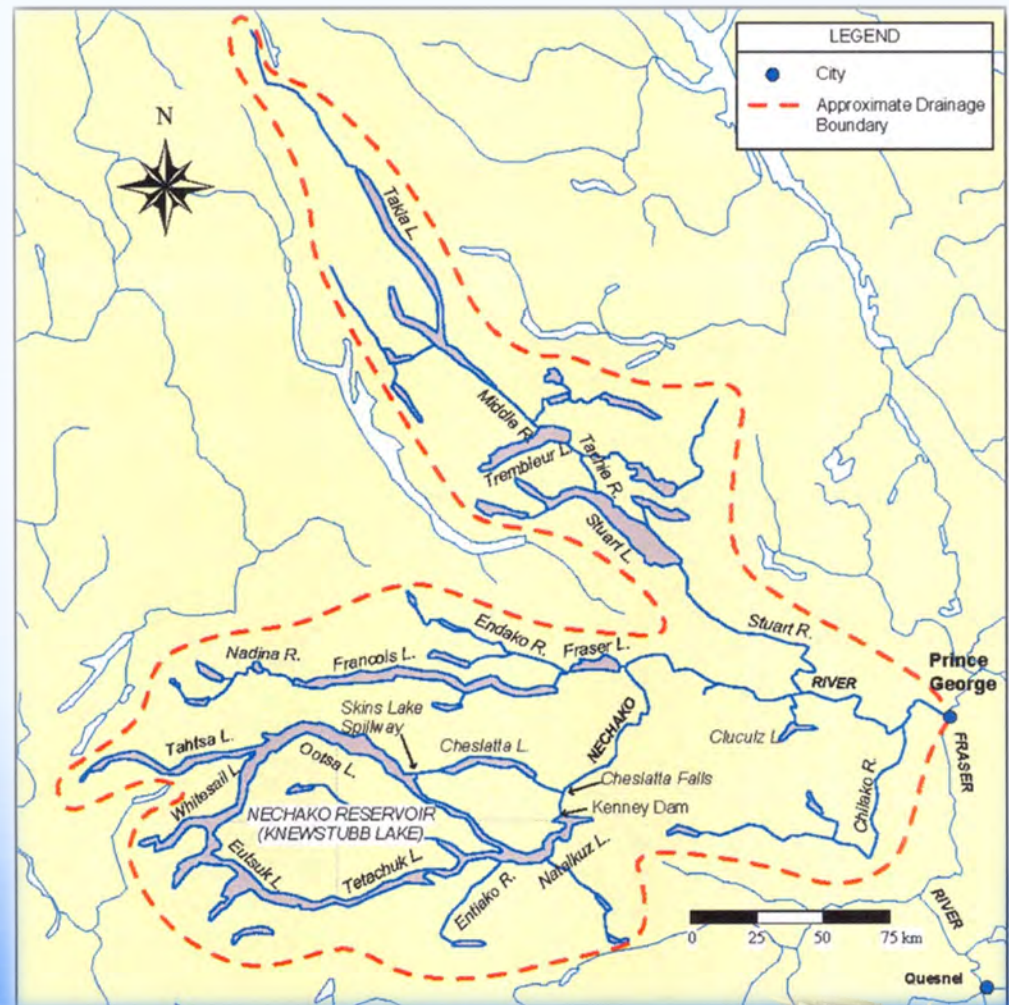
The Nechako Watershed

- The red dotted line indicates the watershed boundary, or the ridge line. All water that falls inside the red dotted area eventually will flow into the Nechako River or in the groundwater.



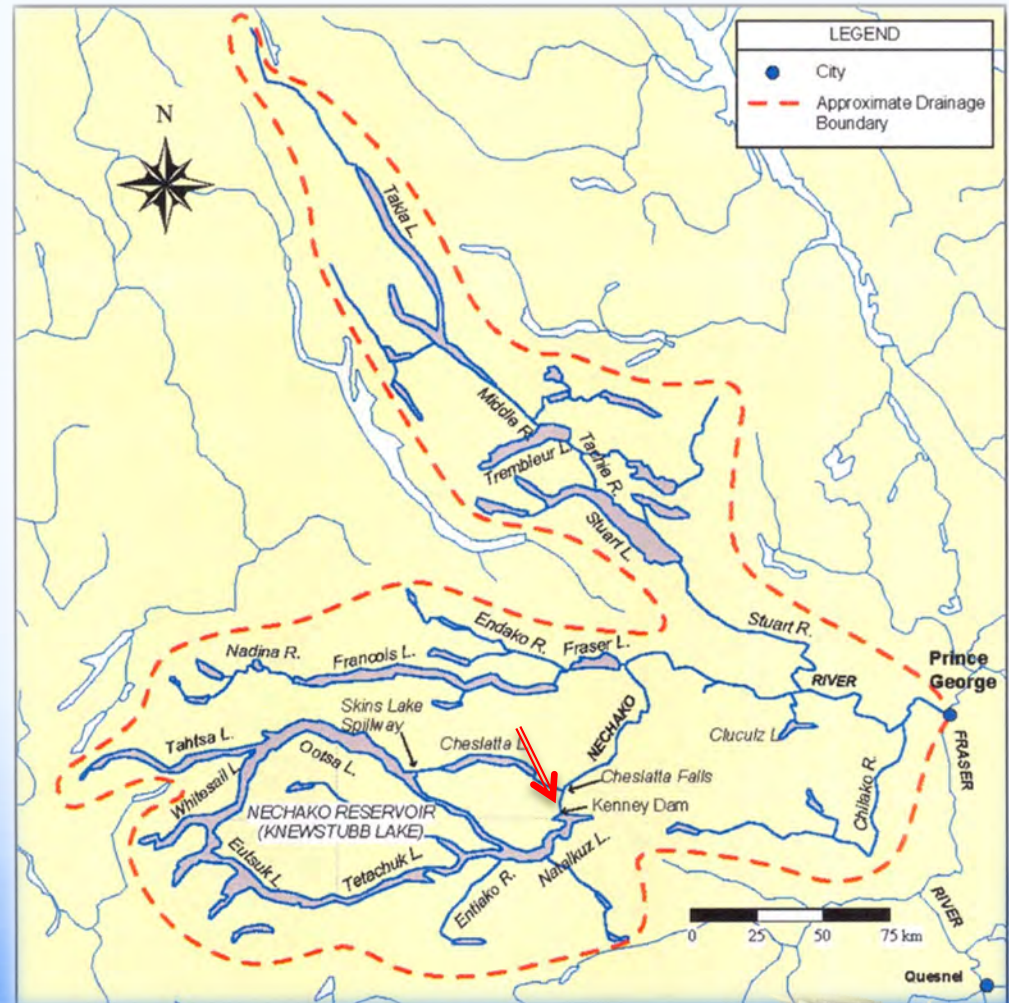
Facts: Nechako Watershed

- The Nechako River is 290 km long.
- It is one of the largest tributaries to the Fraser River.
- Area = 52,000 km²



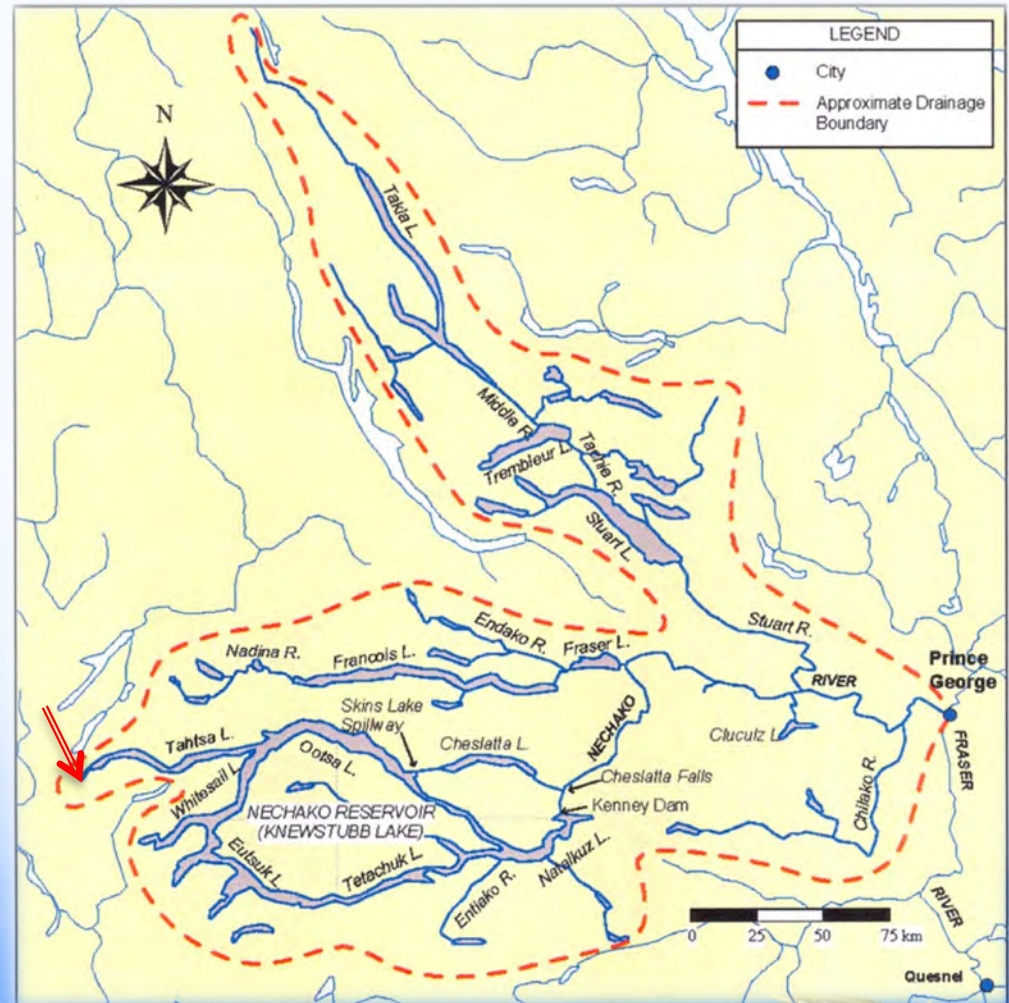
Facts: Nechako Watershed

- The Nechako River is 290 km long.
- It is one of the largest tributaries to the Fraser River.
- Area = 52,000 km²
- Kenney Dam in the Upper Nechako River.



Facts: Nechako Watershed

- The Nechako River is 290 km long.
- It is one of the largest tributaries to the Fraser River.
- Area = 52,000 km²
- Kenney Dam in the Upper Nechako River.
- Much of the water of the Upper Nechako River is diverted west to Kemano for power.

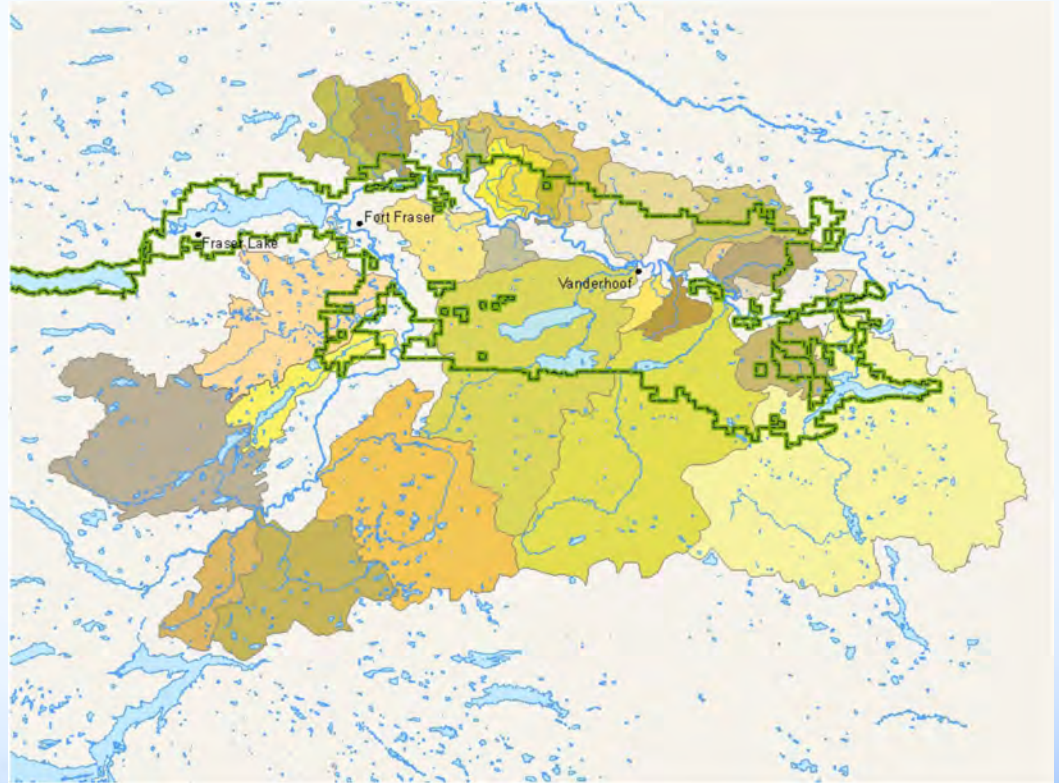


Kenney Dam & Reservoir

- Built in 1952 to create a reservoir.
- The water at the west end of the reservoir is now ‘forced’ to flow westward to the ocean (against its natural drainage pattern) to generate hydroelectric power. The water then enters the Kemanan River.
- Results:
 - Reduced the amount of water going eastward into the Nechako River, which significantly altered its width, depth and flow rate.
 - Controls spring flooding (less frequent and less severe).
 - Some areas of the Nechako River are now dry or a lake.
 - Significantly altered the overall ecosystem.

Sub Basins of the Nechako Watershed

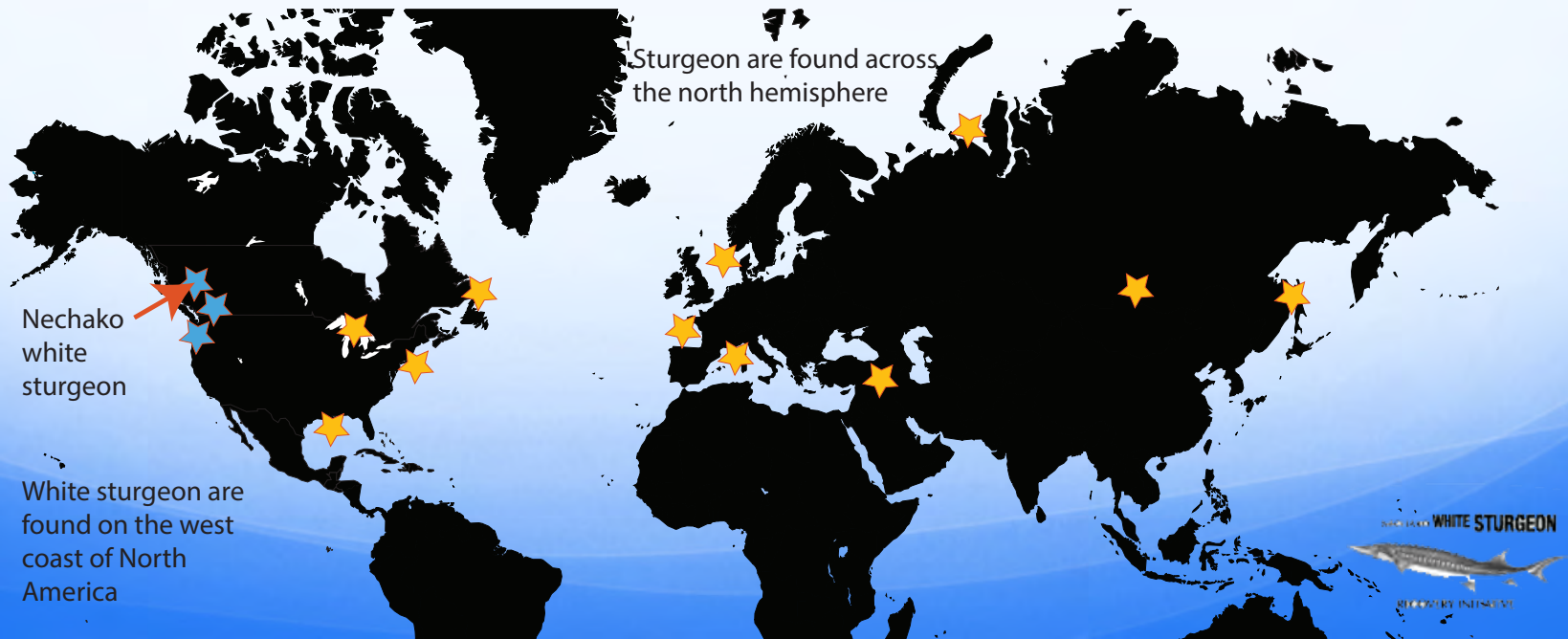
- There are over 30 **sub basins** or smaller river systems within the Nechako Watershed.
- The green line indicates the agricultural land in the Nechako Watershed.



**What does this all
mean for Nechako
white sturgeon?**

Where do you find sturgeon?

- There are many different species of sturgeon in the world.
- All sturgeon species are found in the Northern Hemisphere.



White sturgeon

- White sturgeon, *Acipenser transmontanus*, which means ‘sturgeon across the mountains’ are found on the west coast of Canada in two major river systems.
 - Columbia River system
 - Fraser River system

Nechako white sturgeon

- The Nechako River flows into the Fraser River at Prince George.
- Nechako white sturgeon do not swim or mate with sturgeon in the Fraser River.
- The Nechako white sturgeon are genetically distinct from the white sturgeon in the main Fraser River.



Nechako white sturgeon

- In the Nechako River, the Nechako white sturgeon are found in the main stem river as well as some lakes.
- There are First Nations records of sturgeon in Takla Lake.
- A known spawning site is just upstream of the bridge in Vanderhoof.

